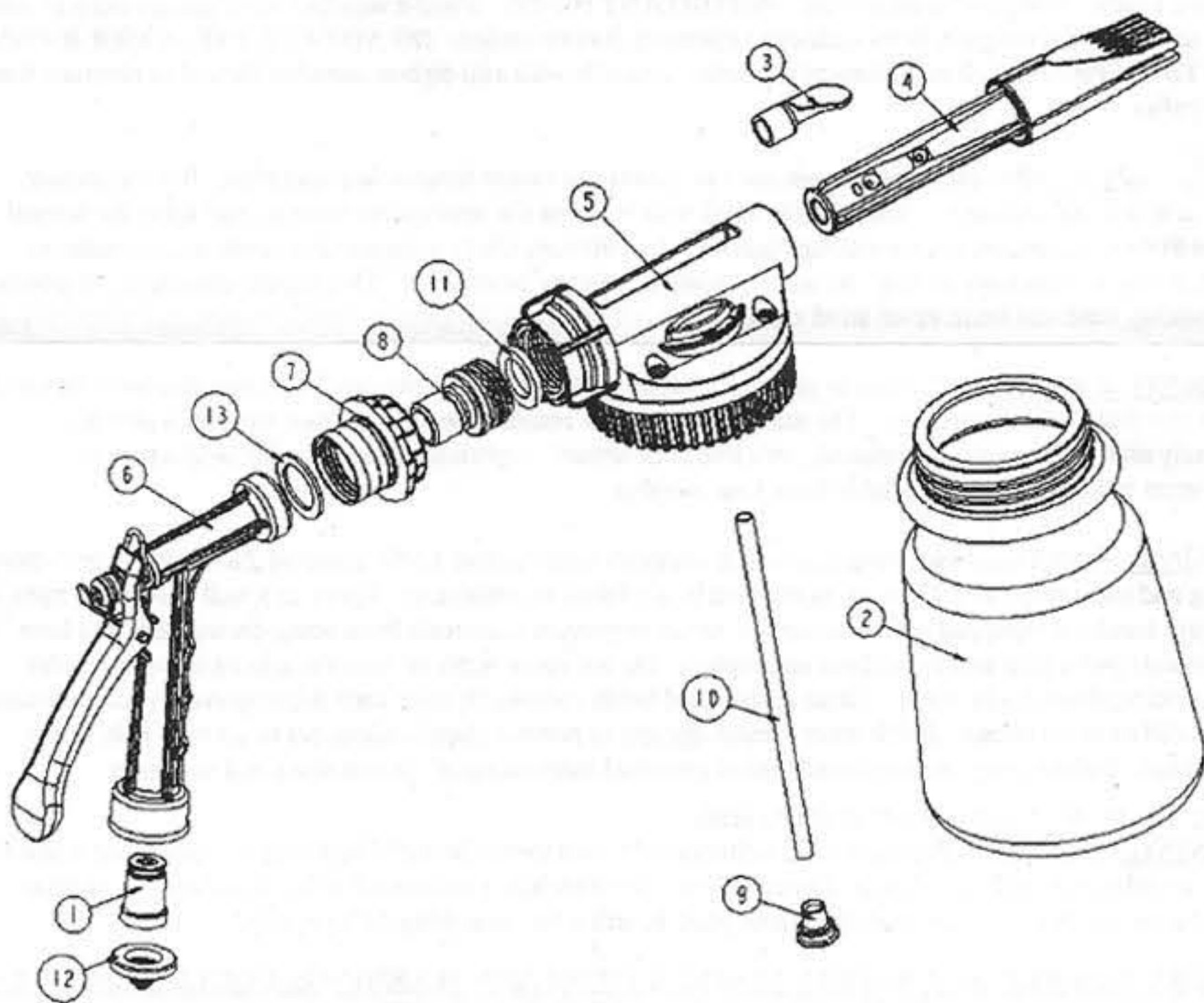


DESCRIPTION	PART NUMBER
1 - Anti-Siphon Unit	7373
2 - Bottle	Quart 9520(single dilution rate) 9520MR (multi-dilution rate) Half-Gallon 9525 (single dilution rate) 9525MR (multi-dilution rate)
3 - Deflector	7319
4 - Foam Wand	7571GM (Standard) 7571LD (Long Distance)
5 - Mixing Head Complete	9511MR (Multi-Ratio) * 9511 + Dilution Rate (Single)
6 - Pistol Grip Shut-Off	751SPEC (Includes Anti-Siphon Unit & Filter Washer)
7 - Quick Coupler/Female with poly guard	09QCFPB
8 - Quick Coupler/Male	09QCMBLK
9 - Screen & Holder	36277
10 - Siphon Tube	95QG24 (Quart) 95HG24 (Half Gallon)
11 - Washer (Head)	57310
12 - Washer (Filter)	6817
13 - Quick Coupler Washer	09QSR

* MUST SPECIFY MODEL NO. AND RATIO



OPERATING INSTRUCTIONS FOR FOAMASTER II FOAM CLEANING GUN

APPLICATION: For cleaning, degreasing or disinfecting when a foam is desired to increase surface contact time. Supermarket and packing house meat cutting rooms and equipment. Food handling and preparation areas, institutional, industrial, or public restrooms, shower rooms, and locker rooms. Animal cages, dairy equipment, trucks, cars and other equipment.

SPECIFICATIONS: *Water Pressure:* 40-90 psi (for maximum accuracy 40 to 60 psi). *Output* - 1-1/2 gallons per minute. *Spray pattern* - foaming attachment provides a fan spray, removes for a solid stream. Deflector attachment for non-foaming fan spray patterns. Optional longer distance foam wand available. *Anti-Siphon* - Protects water supply. (NOTE: A slight discharge of water from base of handle when water is turned off is normal and indicates anti-siphon is functioning properly). *Standard Single Ratio* - 4 oz. of water weight chemical per gallon of solution sprayed. *Customized ratios* - can be set from 1/4 oz. per gallon to 14 oz. per gallon. Note: This range is affected by the viscosity of the chemical. *Multi-ratio* dial has 5 mixing head settings and off as follows:

MULTI-RATIO DIAL HAS 5 MIXING HEAD SETTINGS AND OFF					
A	B	C	D	E	Ø
1-128	1-64	1-32	1-20	1-10	OFF
1 oz./gal.	2 oz./gal.	4 oz./gal.	6 oz./gal.	12 oz./gal.	

ASSEMBLY INSTRUCTIONS: Slide plastic siphon tube inside sleeve under bottle cap, attach bottle to gun. Slide small end of foam tube over tube connector on outlet end of Mixing Head.

OPERATION INSTRUCTION: Connect water supply hose to pistol grip shut-off-valve handle. Remove and fill bottle with liquid chemical concentrate. **CAUTION:** To prevent chemical loss from bottle out of air vent hole in mixing head, sprayer assembly must remain in upright position at all times. Turn dial to desired mixing rate letter to siphon chemical. This will automatically mix chemical with water at the factory pre-set dilution rate selected on dial. Pistol grip shut-off-valve lever must be fully depressed for accurate mixing.

For a powerful clear water rinse, remove handle from siphon head and use as an insulated water nozzle. Pull back snap ring on female quick coupler to detach or reattach handle to mixing head. For a more gentle rinse without removing handle, move dial to off setting. **IMPORTANT NOTE:** Handle supplied with gun contains an anti-siphon to protect water supply from accidental chemical contamination. **DO NOT USE ANY OTHER HANDLE WITH THIS SPRAYER.** If replacement is needed, a handle with anti-siphon installed should be obtained from your supplier.

MAINTENANCE: After each use the gun must be cleaned to insure trouble-free operation. Return unused chemical to original container. Rinse bottle, refill with water or the appropriate solvent, and spray for several minutes to rinse out orifice within mixing chamber. In instances where a chemical is particularly caustic or viscous, it may be necessary to soak the mixing head in water or neutralizer. This should eliminate contamination of the mixing head and build up of dried chemicals.

WARRANTY & REPAIR: This gun is guaranteed against defects in material and workmanship for a period of one (1) year from date of purchase. The manufacturer is not responsible for guns that have been altered, incorrectly used, improperly maintained, not cleaned or abused. Information on parts for field repair or replacement of lost parts, are available from your supplier.

WARNING: Always wear eye protection which complies with current ANSI Standard Z87.1. Wear protective clothing and use a respirator when recommended by chemical manufacturer. Spray in a well ventilated, open area. Pistol grip handle is equipped with anti-siphon device to prevent chemicals from being drawn back into hose. Do not substitute pistol grip handle without anti-siphon. Do not spray water or solution into an electrical outlet. Severe electric shock could result. Clean sprayer and bottle thoroughly after each use to prevent contamination between different chemicals. Bottle must remain upright to prevent chemical loss out of air vent hole in the mixing head. Before using, read and understand chemical manufacturer's instructions and warnings.

NOTE: The brass in this product contains lead.

WARNING: This product contains lead, a chemical known to the State of California to cause cancer and birth defects or other reproductive harm. Do not place your hands in your mouth after handling the product. Do not place the product in your mouth. *Wash your hands after touching this product.*

FAILURE TO HEED ALL SAFETY INSTRUCTIONS AND WARNINGS COULD RESULT IN PROPERTY DAMAGE, SERIOUS BODILY INJURY OR DEATH.