



**MTM Hydro Inc.**  
**components and accessories for high pressure cleaners and car wash industry**  
7430 Washington Ave. So. - Eden Prairie, Minnesota 55344  
phone 952.746.4825 - 866.MTM.4020 - fax 952.746.4829 - 866.MTM.4021  
www.mtmhydro.com - info@mtmhydro.com

## **PROFESSIONAL FOAM LANCE – Users Manual**

The professional Foam Lance allows you to obtain high pressure water mixed with detergent, producing foam. The Professional Foam Lance has many design features to allow the user to spray varying distances while creating a wide range of consistencies of foam. By twisting the External Plastic Body/Nozzle (#20) you can create a wide fan flow or concentrated direct flow spray pattern. By twisting the adjustable air intake knob (#9g) you can increase or decrease the consistency of the foam produced. Overall foam consistency or concentration can be regulated by using various concentrations of detergents in the one liter Detergent Tank (#1). It is important to note that the final consistency of foam of produced by the Professional Foam Lance is primarily determined by the type of detergent utilized in the Detergent Tank. User should try varying types and concentrations of detergent to reach the desired foam results.

### **Technical chart**

<b>Part #</b>	<b>Max Pressure (psi)</b>	<b>Max Flow (US gpm)</b>	<b>Max Temperature (°F)</b>	<b>INLET</b>	<b>Ø Nozzle (mm)</b>
<b>14.0263</b>	5000	5,3	140	¼ F	1,25

### **Product's use**

Assemble the Professional Foam Lance by firmly pushing the clear vinyl detergent suction tube (#2) completely over the brass barb (#3) on the Foamer Spray Head Assembly.

The Foam Head Assembly is provided with a ¼" QC nipple inlet for easy connection to QC style couplers. If the lance is to be used with an M22 connection the nipple should be removed and replaced with the included brass M22 fitting. Please note the M22 fitting should only be inserted with the use of Teflon thread tape or commercial thread lock sealant.

The foamer may now be connected to a properly set up high pressure cleaner operating at a maximum of 5.3 gpm @ 5000 psi with included pressure regulators and safety and temperature relief devices.

Use only fresh, clear water. Ask our technical office before using special or corrosive fluids.

It is recommended that pressure washer regulator/unloader be adjusted to a lower pressure/flow setting at initial foamer installation and then adjusted to reach optimal performance/operation. Remember concentration and consistency of foam will depend upon type and concentration of detergent utilized in detergent bottle and also the flow/discharge of the pressure washer and settings utilized on the Professional Foam Lance.

When user has finished with each use of the Professional Foam Lance it is important to completely rinse the spray head and detergent bottle and suction tube with clean, clear water to assure correct operation the next time the Foam Lance is used.

**WARNING:** Check that the Professional Foam Lance is compatible with the system's functioning data in order not to overcome the maximum values of pressure, flow and temperature indicated into this manual (see Technical Chart).

Installation must be exclusively done by skilled workers. **The Manufacturer is not responsible or liable for any loss or damage arising from a bad installation or done by unskilled workers.**

### **Service**

Service must be done exclusively by skilled workers using only original MTM Hydro's spare parts.

To correctly assemble any dismantled parts, follow the indications listed into the exploded view on this manual.

**WARNING:** The parts dismantled for servicing, will have to be reassembled in order to exactly restore the original conditions of the foam lance. **The Manufacturer is not responsible or liable for any loss or damage arising from a bad service or done by unskilled workers.**

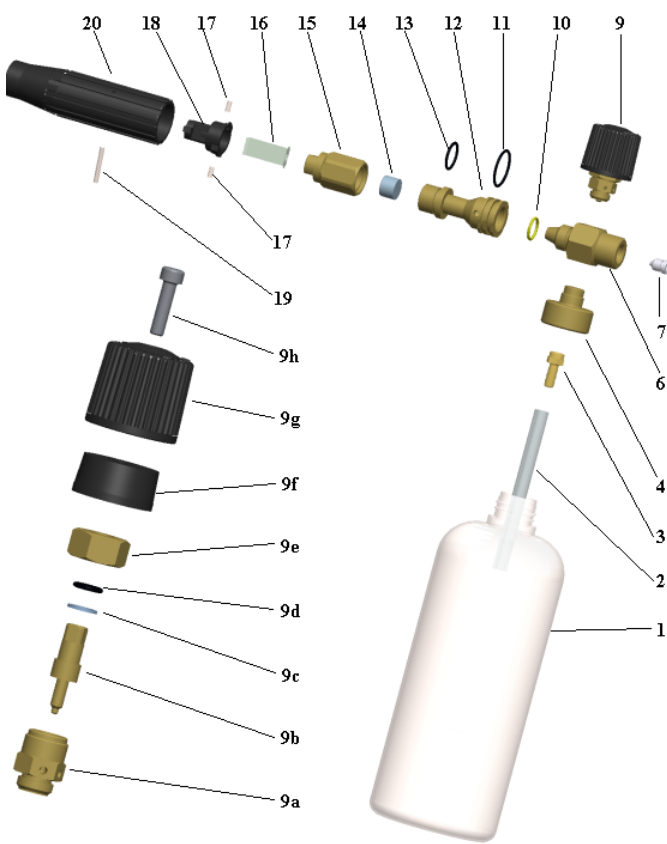
### **Causes and remedies for possible problems**

<b>Problem</b>	<b>Possible cause</b>	<b>Solution</b>
Foam lance's leakage	Presence of dirt/debris Worn seals	Clean Change the seals
Flow not elevated	Hole obstructed nozzle Dirty filter	Clean the nozzle removing dirt/debris Rinse with clear water



**MTM Hydro Inc.**  
**components and accessories for high pressure cleaners and car wash industry**  
 7430 Washington Ave. So. - Eden Prairie, Minnesota 55344  
 phone 952.746.4825 - 866.MTM.4020 - fax 952.746.4829 - 866.MTM.4021  
 www.mtmhydro.com - info@mtmhydro.com

**Professional Foam Lance Exploded View and Component List**



Pos.	Q.ty	Part #	Description
1	1	37.0253	Tank
2	1	37.0254	Suction draught tube
3	1	35.0181	Hose barb Ø6 1/8M
4	1	35.0292	Reservoir box
6	1	35.0291	Central Body
7	1	36.0227	Special nozzle_Ø1,25
9	1	-	Mechanical part air intake
9a	1	35.0293	Plunger coupling
9b	1	35.0294	Plunger
9c	1	35.0295	Plunger washer
9d	1	39.0144	NBR o-ring OR2031 70Sh
9e	1	35.0296	Plunger ring nut
9f	1	37.0156	Plastic knob positioning
9g	1	37.0154	Black plastic knob
9h	1	38.0115	Screw T.C.E.I. M5x20 burnished
10	1	39.0014	NBR o-ring OR2050 yellow
11	1	39.0321	NBR o-ring OR2087 70Sh
12	1	35.0290	Upcoming body
13	1	39.0016	NBR o-ring OR2062 70Sh
14	1	36.0226	Stainless steel filter
15	1	35.0289	Deflector coupling
16	1	36.0138	Thin fan layer stainless steel
17	2	36.0140	Pin 3x8
18	1	37.0217	Deflector
19	1	36.0238	Stainless steel pin Ø3x25
20	1	37.0219	External plastic body

**Further instructions**

To correctly use this product and before proceeding to its installation or to its dismantling, carefully read and follow the instructions and warnings contained in this manual. Take care also to include these instructions into the final user's manual of the machine where the product is assembled.

Any improper use of this product or any tampering of the same may endanger workers. **The Manufacturer is not responsible or liable for any loss or damage arising from a wrong use or from tampering and declines all liabilities about its functioning and safety.**

The component here described complies with the rules and with the lines in force that you can find on the CONFORMITY DECLARATION.

MTM Hydro declines all responsibilities and liabilities in case the prohibition of setting up of the component was not respected before the declaration of compliancy to the rules and/or regulations in force of the machine where the component itself is assembled.

MTM Hydro reserves the right to make any modification to both products and manuals without notice.