



3" RANDOM ORBITAL

Spectacular Results That Are Quick & Safe



Perfect on chrome and other metal surfaces!



Great for motorcycle detailing.



Easily polish or wax smaller areas on your vehicle.



Use it around the home and garage.

SPECIFICATIONS

- Motor: 2 Amps, 240 Watts
- Power Supply: 120 Volts, 60 Hz
- Orbits/Minute: 3,500 - 10,000
- Pad Size: 3"
- Orbit Diameter: 1/8"



Remove water spots, streaks and grime from glass.



Quickly clean areas with road grime, dirt & grease.

Have fun in your garage!®

USEFUL INFORMATION FOR SAFE OPERATION

Please follow the safety instructions below to avoid possible dangers. The safety symbols and the explanations with them require your careful attention and understanding. The safety warnings do not by themselves eliminate any danger. The instruction or warnings they give are not substitutes for proper accident prevention measures.



WARNING: Failure to obey the safety warnings can result in serious injury to yourself or to others. Always follow the safety precautions to reduce the risk of fire, electric shock and personal injury.



WARNING: Do not attempt to operate this unit until you have read and understand the safety rules. Failure to comply can result in accidents involving fire, electric shock or serious personal injury. Save the owners manual and review frequently for continuing safe operation and instructing others who use this tool.



CAUTION: ALWAYS WEAR EYE & EAR PROTECTION WITH ANY POWER TOOL.

The operation of any tool can result in foreign objects being thrown into your eyes, which can result in severe eye damage. Before beginning power tool operation, always wear safety goggles or safety glasses with side shields and a full face shield when needed.

- 1. KNOW YOUR POWER TOOL.** Read this owners manual carefully. Learn its applications and limitations as well as the specific potential hazards related to this tool.
- 2. AVOID DANGEROUS ENVIRONMENTS.** Don't use power tools in damp/wet locations or expose to rain. Keep work area well lit.
- 3. STORE IDLE TOOLS.** When not in use, tools should be stored in a cool, dry place.
- 4. DRESS PROPERLY.** Do not wear loose clothing or jewelry. They can be caught in moving parts. Rubber gloves and non-skid footwear are recommended when working outdoors. Also wear protective hair covering to contain long hair.
- 5. ALWAYS WEAR SAFETY GLASSES.** Everyday

eyeglasses have only impact resistant lenses, they are not safety glasses.

- 6. PROTECT YOUR LUNGS.** Wear a dust mask if operation is dusty.
- 7. PROTECT YOUR HEARING.** Wear hearing protection during extended periods of operation.
- 8. DON'T OVERREACH.** Keep proper footing and balance at all times. Do not use tool on a ladder or on an unstable surface. Secure tools when working at elevated levels.
- 9. REMOVE ADJUSTING KEYS AND WRENCHES.** Make a habit of checking to see that keys and adjusting wrenches are removed from tool before turning it on.
- 10. KEEP DRY, CLEAN AND FREE FROM OIL AND GREASE.** Always use a clean cloth when cleaning. Never use brake fluids, gasoline, petroleum based products or any strong solvents to clean your tool.
- 11. CHECK DAMAGED PARTS.** Before further use of the tool, part that is damaged should be carefully checked to determine that it will operate properly and perform its intended function. Check for alignment of moving parts, binding of moving parts, breakage of parts, mounting and any other conditions that may affect its operation. Any part that is damaged should be properly repaired or replaced.
- 12. DO NOT USE TOOL IF SWITCH DOES NOT TURN IT ON AND OFF.**
- 13. DO NOT OPERATE THIS (OR ANY) TOOL WHILE UNDER THE INFLUENCE OF DRUGS, ALCOHOL OR ANY MEDICATION.**
- 14. GRIOT'S GARAGE IS NOT RESPONSIBLE FOR ANY MISUSE OF THE RANDOM ORBITAL FOR ANY INJURY OR DAMAGE INCURRED TO ANY PERSON OR OBJECT RELATED TO THE RANDOM ORBITAL.**
- 15. YOUR ORBITAL SHOULD NEVER BE CONNECTED TO POWER SUPPLY WHEN YOU ARE ASSEMBLING PARTS, MAKING ADJUSTMENTS, OR REPLACING PADS, CLEANING OR WHEN NOT IN USE.**
- 16. BE CAREFUL NOT TO LET YOUR HAND COMPLETELY COVER AIR VENTS.**

ORBITAL FEATURES

Your orbital is suitable for use with many GRIOT'S GARAGE products.

Before attempting to use your orbital, familiarize yourself with all operating features and safety requirements.

POWER SWITCH

The power switch is located on the top of the unit. Slide the switch forward to turn the orbital on. Slide it back to turn it off.

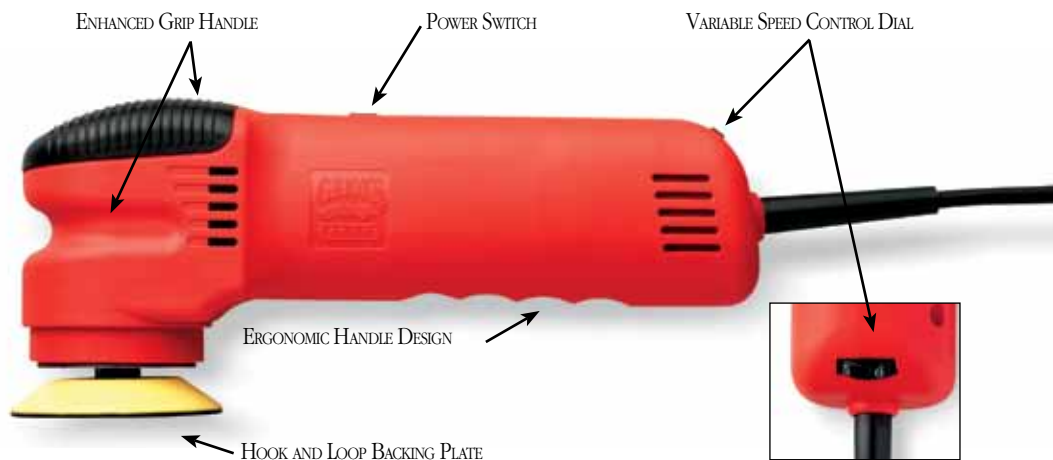
SPEED CONTROL DIAL

The variable speed control dial is located at the back of the unit just above the power cord. To adjust the speed simply rotate the dial to the desired setting. For polishing and paint sealant application speed setting 5 to 6 is recommended. For waxing speed setting 3 to 4 is recommended.

INSTALLING 3" POLISH AND WAX PADS

- Inspect pad before installing. DO NOT use torn or worn out pads.
- Unplug your orbital.
- Center pad on backing plate and press firmly around pad.

Hold your orbital in front and away from you, keeping the body of the orbital clear of the vehicle. Start your orbital by sliding the switch forward while holding the pad against the surface to be polished or waxed.





USING YOUR 3" RANDOM ORBITAL

Thank you for selecting this quality GRIOT'S GARAGE product.

Your 3" Random Orbital is shipped with the backing plate unattached. Attach the backing plate by threading the stud into the counterbalance bearing hub. Tighten the backing plate until snug using the supplied wrench. Do not over tighten. Check this attachment periodically to insure the backing plate does not come loose during operation.

Please pay close attention to the Useful Information for Safe Operation, Warnings and Cautions. If you use your 3" Random Orbital properly and only for what it is intended, you will enjoy years of safe, reliable service.

BEFORE YOU MACHINE POLISH

Always start off by using GRIOT'S GARAGE Paint Cleaning Clay before using machine polishes, sealants, waxes or glaze. Paint Cleaning Clay will remove contaminants embedded in the paint that normal washing won't remove. This way you won't create more scratches in the paint surface. Polishes are designed to reduce and remove swirl marks, light scratches and paint blemishes.

ANALYZE YOUR PAINT BEFORE STARTING

Before polishing, start by analyzing your paint. Look at the swirl marks and scratches in the paint. How deep are they? Do they go into the primer, do they go half way down into the paint, or are they just light surface swirls caused by normal wear and tear? Keep in mind, to remove a swirl mark you must polish the paint in the surrounding area down

to the base of the scratch. In many cases, if not all, it is much better to polish out the minor scratches while reducing the visibility of the deep ones. We have certain products that contain special fillers and waxes that do their best to fill in deeper scratches.

POLISH, WAX AND SEALANT APPLICATION

Our specially developed foam pads, combined with our machine polishes, waxes and sealants, provides an ideal application. It is important to use separate pads for each machine polish, wax or sealant. This way, no contamination occurs between the pads. (You wouldn't want to use a polish pad to apply a final coat of wax!) The pads can be marked on the side with a permanent felt pen to keep them separated. For extended polishing and wax sessions it is necessary to use more than one pad. For an average size vehicle two or three pads may be necessary when polishing. This will help prevent premature pad wear. Always inspect your pads before and during use to determine if you need a fresh pad. If your pad is torn or showing wear it's time to replace the pad. If the backing material is separating from the foam, this indicates it is time to replace the pad.

OPERATION

Our Random Orbital operates in an orbiting motion while spinning around. (see diagram A) Start by centering the pad on the orbital's hook and loop backing plate. Apply your polish, glaze, wax or sealant to the pad as recommended by the product instructions.

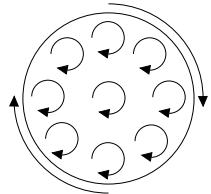


DIAGRAM A

To get comfortable using the GRIOT'S GARAGE Random Orbital, set the speed to 3, put the pad on the paint surface and then turn the orbital on. Increase the speed gradually to 4 or 5 so that the backing plate is rotating at approximately one revolution per one or two seconds. The more you lean into the machine, the slower the rotation will be. Try not to lean into the machine until you feel comfortable with this system.

Different polishes and waxes will require different speeds. Your final waxes and sealants, on the other hand, may only require speeds 2 or 3.

Make an imaginary square on the panel (normally I start with a 2' x 2' section of a hood) and start in the upper left hand corner. Go across to the right (see

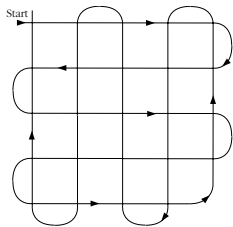


DIAGRAM B

diagram B) then drop down and go to the left. When you reach the left side, drop down and go to the right. When you can't go across the panel anymore, start going up and down in the same fashion.

What you are trying to do is distribute the polish, wax or sealant evenly and cover every part of the panel. Keep going in this motion until all of the liquid is evenly distributed and has just about disappeared. I like to pass over an area six to eight times. (Complete the imaginary square three or four times.) Wipe off any excess with our Micro Fiber Cloths and then examine your paint.

WHICH POLISH SHOULD YOU START WITH?

Always use our Orange Foam Polish Pads for polishing. Use ultra-fine Machine Polish 4 if you have nearly flawless paint with only light swirls and toweling marks. (Typical of new cars when delivered from the dealership.) It will eliminate those micro-fine toweling marks and swirls, especially in dark paints.

For most surface conditions use GRIOT'S GARAGE Machine Polish 3. It is a polish that will remove many imperfections on the first pass. If you would like to remove even more imperfections, use Machine Polish 3 one more time. You may use Machine Polish 3 as often as you want

Use Machine Polish 2 or 1 to remove deeper scratches and swirl marks. After using Machine Polish 1 and 2, you may see minute scratches. This is normal. Remember, to remove a scratch, you have to get down to the bottom of the scratch, and that means removing paint (microns at a time) in the surrounding area. Your subsequent steps (Polish 1 to 2, then 2 to 3) will remove the minute scratches. GRIOT'S GARAGE Machine Polishes are designed to work in steps. If you start out with Machine Polish 1, you must follow up with Machine Polish 2 to remove the minute scratches left behind by Machine Polish 1. After using Machine Polish 2,

use Machine Polish 3 to remove the minute scratches left behind by Machine Polish 2. At this point you may want to use Machine Polish 3 again to further enhance the paint.

PROTECTING YOUR PAINT

After completing these steps, you have fully polished your paint and it is ready for protection. Now is the time to apply wax, sealant or glaze in the same manner as the polishes. Not much product is needed on the pad, and it is important to work it in evenly, using the same imaginary square technique (see diagram B). You will notice even more swirl marks disappear, the paint work will be deeper in color and the gloss will be enhanced. Work the wax or sealant in until you can hardly see any haze. Now buff it out by hand with one of our Micro Fiber Cloths for a haze-free finish.

If using Best of Show Wax® apply a second coat in the same manner for improved depth, color and gloss. Best of Show Wax® will take your paint to the next level of perfection. This is the wax concours participants use to obtain unmatched results. When you are done, you will have a flawless finish that lasts longer and looks better than any other machine applied product on the market.

FOLLOW UP CARE/MAINTENANCE

After you have fully polished your paint, you may only need to protect your paint to maintain your paint's impeccable finish throughout the year or once a year. To do this, use the Paint Cleaning Clay first, follow up with the one of our waxes or sealants, and you're done! For fast clean-ups between waxes, try Speed Shine®.

CLEANING YOUR FOAM PADS

Cleaning your foam pads is simple! First wet your pads with lukewarm water. Take some GRIOT'S GARAGE Micro Fiber & Foam Pad Cleaner and put a small amount on the pad. Take your fingers and lather up the pad, then squeeze the pad together, freeing the pad of the compounds and waxes. Rinse thoroughly and wring out. Dry out the pad by standing it up on its side.

GRIOT'S GARAGE ORBITAL PRODUCTS

GRIOT'S GARAGE MACHINE POLISH 1

Our most aggressive polish that is still safe for any paint surface. I would not recommend going to a stronger compound than this. Removes moderate oxidation, water spots, deep swirl marks, stains and other paint defects. Use this product only after Machine Polish 2 has been tried. Follow up with Machine Polish 2 and 3 for a show finish.
11161 Machine Polish 1, 16 Oz.

GRIOT'S GARAGE MACHINE POLISH 2

A mild polish. Use Machine Polish 2 when Machine Polish 3 can't remove the deeper swirl marks. If you still can't take out heavy swirl marks and other paint imperfections, go on to Machine Polish 1. Removes light oxidation, mild water spots, swirls, stains and other minor paint defects.
11162 Machine Polish 2, 16 Oz.

GRIOT'S GARAGE MACHINE POLISH 3

To be used as a final polish after your paint has been cleaned with Paint Cleaning Clay or as a follow up after Machine Polish 2. May be used two, three or four times in a row for ultra-safe swirl removal. Each time you use it, you will see more and more paint imperfections disappear. Always start with Machine Polish 3. If you can't remove the swirls and other contaminants, go on to Machine Polish 2. Follow up with Best of Show Wax®, Carnauba Wax Stick, Paint Sealant, One-Step Sealant or Paint Glaze.
11163 Machine Polish 3, 16 Oz.

GRIOT'S GARAGE MACHINE POLISH 4

Use ultra-fine Machine Polish 4 when you have nearly flawless paint and only have light swirls and towel marks. (Like new cars that are delivered from the dealership.) It will eliminate those micro-fine towel marks and swirls. Follow up with wax or sealant.
11091 Machine Polish 4 (Finest Polish), 16 Oz.

GRIOT'S GARAGE PAINT GLAZE

Made with premium oils and fillers to hide light swirl marks, use Paint Glaze when you do not want to polish to remove the fine scratches from your paint. Apply it sparingly using our Orange Foam Polish Pads. A little goes a long, long way. There is no need to let the glaze dry, so wipe the excess off

after application with a yellow Micro Fiber Polish Removal Cloth. Glaze can be applied in layers so the more coats you apply, the more you hide. Use it as a final coat or seal it in with Best of Show Wax®, Carnauba Wax or Paint Sealant.
11041 Paint Glaze, 16 Oz.

GRIOT'S GARAGE BEST OF SHOW WAX®

A natural, carnauba based liquid wax that offers unmatched depth, color enhancement, ease of use and the ability to layer up to five coats at a time! May be applied by machine or hand. Lasts up to three to four months. For the finest possible finish, this is the wax to use.
11171 Best of Show Wax®, 16 Oz.

GRIOT'S GARAGE CARNAUBA WAX STICK

As soon you use our awesome Carnauba Wax Stick, you'll wonder why no one thought of this idea before! The unique stick design allows you to easily spread our Carnauba paste on our Red Foam Wax Pads and use with our Random Orbitals! Simply turn the knob at the bottom to expose the amount of wax you'll need, rub it across your wax pad and start enjoying the benefits of our paste wax without the hassle of digging it out of a container! An innovative way to use the very finest natural carnauba wax in the world. Works best when applied by machine or by hand with our Red Foam Wax Pads.
11085 Carnauba Wax Stick, 3.5 Oz.

GRIOT'S GARAGE PAINT SEALANT

Paint Sealant provides a synthetic layer of protection, yet still gives a high gloss finish that you only have to apply once a year. It's easy to use by hand or Random Orbital, and even easier to take off with hardly any residue! If you don't have the time to wax your car 3 to 4 times a year, park outside without a cover, drive your car through car washes occasionally, and want maximum protection from acid rain, fallout and bird droppings, then Paint Sealant is the product to use.
11075 Paint Sealant, 16 Oz.

GRIOT'S GARAGE ONE-STEP SEALANT

All the benefits of our ultra-durable Paint Sealant with gentle polishes added to remove scratches, oxidation and swirl marks while leaving behind protection for your paint for up to one year. Think of it as Paint Sealant with Machine 3 added for a true One-Step Sealant! The best way to apply it is with our Random Orbital and Orange Foam Polish Pads.

Even when you use it by hand, the results are amazing. Color, depth and clarity plus long term protection in one easy step.
11075 One-Step Sealant, 16 Oz.

GRIOT'S GARAGE GLASS POLISH & FINE GLASS POLISH

Fine Glass Polish is for mild spots that you normally see on your windshield, sunroof and side glass. Spots that are visible but hard to feel with your fingernails. For water spots that normally occur on shower doors and that you can feel with your fingernails, we've introduced Glass Polish. It has more polishing compounds for heavily calcified deposits. Use either one periodically and your wipers will last longer! With our Random Orbital you'll be amazed how fast your glass gets clean. For uncoated glass only. Enjoy crystal clear perfection.
11017 Fine Glass Polish, 16 Oz.

GRIOT'S GARAGE METAL POLISH

This ultra fine polish produces a mirror finish. Special polishing agents restore the original brightness without scratching. Anti-oxidizing ingredients provide a barrier that assures lasting protection. Perfect for use on all polished metals including stainless steel, aluminum, copper and brass. Also excellent for cleaning and polishing chrome, gold, platinum, fiberglass and Plexiglas®. For best results, use with our Metal Polishing Pads. Great for hand or Random Orbital polishing applications.
11238 Metal Polish, 2.5 Oz.

GRIOT'S GARAGE PLASTIC POLISH

To remove mild scratches and restore clarity to plastic windows, use Plastic Polish. I've restored plastic windows in convertible tops that, at first glance, I thought I might have to replace. Plastic Polish will remove minor scratches. Perfect to clean and bring damaged CDs and DVDs back to life.
11186 Plastic Polish, 8 Oz.

GRIOT'S GARAGE 3" ORANGE FOAM POLISH PADS

3" diameter pads are perfect for use with the GRIOT'S GARAGE 3" Random Orbital. They allow you to lean into the machine more to remove deep scratches. Safe for clear coats and all other types of paint. For use with our polishes and One-Step Sealant.
11241 3" Orange Foam Polish Pads, Set of 3

GRIOT'S GARAGE 3" RED FOAM WAX PADS

3" diameter pads that are softer and gentler for waxing with our Best of Show Wax®.
11263 3" Red Foam Wax Pads, Set of 3

GRIOT'S GARAGE 3" WHITE FOAM METAL POLISH PADS

3" diameter pads designed specifically for use with our Metal Polish.
10635 3" White Foam Metal Polishing Pads, Set of 3

GRIOT'S GARAGE 3" GLASS POLISH PADS

Perfect for all uncoated glass surfaces.
10665 3" Glass Polish Pads, Set of 3

OTHER TIPS TO HELP YOU

- Always start with the least abrasive polish and work down. If your paint is in excellent shape, you may only need to use Machine Polish 3. For paint that has been left to the elements for over a year or has mild oxidation, you may want to start off with Machine Polish 2 and then follow up with Machine Polish 3. Only use Machine Polish 1 when you are dissatisfied with the results of 2 and 3 and are trying to remove deep scratches.
- Try not to bear down on the orbital; let the machine and the polishes do the work. Start with a tablespoon of product to moisten the pad initially and then add a teaspoon to keep the pad moist for subsequent panels. Make sure you fully work the polish in so when it comes to wipe it off it is much easier. A dime-sized drop of Best of Show Wax® will cover a 2' x 2' section; a little goes a long way.
- Do not use wool pads with this machine. Wool pads (and synthetic wool) should only be used to "knock down" paint after it has been freshly painted. Using a wool pad with the wrong compound can seriously damage otherwise good paint. Also, steer away from cotton pads. Polishing compounds can load up on a cotton pad, causing it, in some cases, to introduce new swirl marks!
- To keep your paint looking sharp between washes, use GRIOT'S GARAGE Speed Shine® or our Spray-On Wax. It is important to remove tree sap, bird droppings, acid rain and other contaminants as soon as possible.



ANSWERS TO YOUR QUESTIONS

To order another GRIOT'S GARAGE 3" Random Orbital, or for a complete selection of quality GRIOT'S GARAGE products, please write or call us toll-free at 800-345-5789.

You may order on our website at

www.griotsgarage.com. Reorder item number:

10739 3" Random Orbital

Specify 10 Foot Power Cord or 25 Foot Power Cord

*Have fun in your garage!**

GRIOT'S GARAGE, INC.
3333 SOUTH 38TH STREET
TACOMA, WA 98409

800-345-5789

www.griotsgarage.com

© Griot's Garage, Inc.