

**GTECHNIQ**  
SMART SURFACE SCIENCE  
TOTAL SURFACE PROTECTION

GTECHNIQNA.COM

866 561 0487 | info@gtechniqna.com



**EXTERIOR** C1 EXL C2 vs



**INTERIOR** I1 I2



**GLASS** G1



**WHEEL** C5

GTECHNIQNA.COM  
866 561 0487 | info@gtechniqna.com

© 2012 Gtechniq NA, LLC. All Rights Reserved

**GTECHNIQ**  
SMART SURFACE SCIENCE



**GLASS**



**WHEEL**

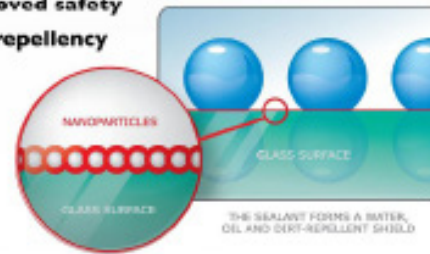
**G1**

**CLEAR VISION & SMART GLASS**

Unlike regular rain repellent coatings that adhere to the surface of the glass using relatively weak physical bonds, G1 Clear Vision & Smart Glass uses a chemical bond which gives G1 unrivaled durability. G1's excellent durability and exceptionally low smear characteristics make it ideal for car windcreens.

**SMART SURFACE SCIENCE PROTECTS AGAINST:**

- » 15-20,000 miles durability
- » Easy bug and ice removal
- » Improved safety
- » Dirt repellency



ADHESIVE COMPONENTS BOND WITH THE GLASS SURFACE, ANTI-ADHESIVE COMPONENTS ARE FACING OUTWARDS

**C5**

**WHEEL ARMOR**

Independently proven to outlast other rim coatings, C5 Wheel Armor uses a unique chemical bond to become the functional surface of your rims, making them dirt and brake dust repellent, as well as being much easier to clean. A single application lasts up to 18 months.

Based on similar technology to our C1 paint protection, C5 is able to give you greater performance due to its unique exceptionally fine surface rheology and chemical bonding mechanism. The former property gives the coating its excellent stain and contaminant resistance while the latter its durability.

**SMART SURFACE SCIENCE PROTECTS AGAINST:**

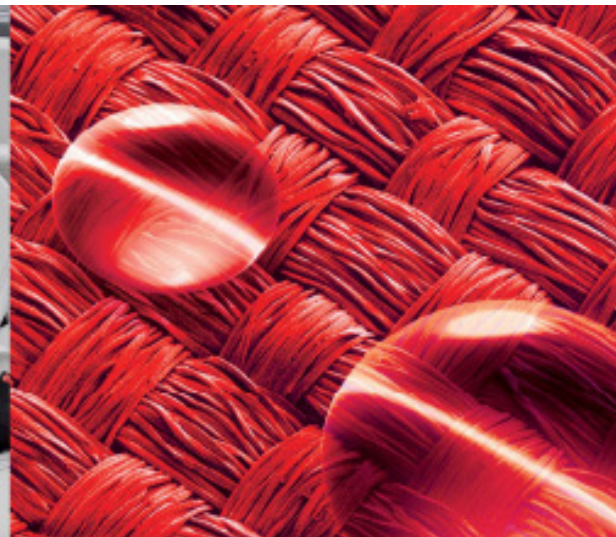
- » Road Grime
- » Brake Dust
- » Light Surface Scratching



## EXTERIOR



## INTERIOR



### QUARTZ COMPOSITE LAQUER

CI Crystal Lacquer forms a sub micron 100% clear quartz film which is extremely hard and provides a durable, stain-resistant surface that repels salt, oil, water, and dirt. These characteristics are why CI is unbeatable for long-term surface care since your car will require less washing as dirt, bugs and road tar are washed away very easily.

This combined with the hardness of the coating will help to prevent premature paintwork dulling from micro scratches caused by frequent vigorous car washes to remove previously hard to remove surface contaminants. CI is also independently proven to have the sternest UV filter of any paint protection product on the market and forms the strongest barrier against bird

#### SMART SURFACE SCIENCE PROTECTS AGAINST:

- » Color Fading
- » Bird Droppings
- » Acid Rain
- » Tree Sap
- » Oxidation
- » Bug-Splatter
- » Road Grime



### EXOV2 ULTRA DURABLE HYBRID COATING

EXOV2 offers sensational surface functionality and protection and an exceptionally easy application process. EXO works on a very wide range of substrates including paint, gel coat, glass, metal, fabric, stone, and perspex. Based on the next generation of inorganic-organic hybrid materials, it embodies our goal to offer products that work harder and smarter, meaning more time enjoying your car, boat, plane or RV and less time maintaining it. EXO can be used alone or as a top coat to CI.



### LIQUID CRYSTAL

C2 Liquid Crystal is the revolutionary way to make your car, boat, plane or RV shine and stay clean longer, thanks to Gtechniq's unique 3S Smart Surface Science. With C2 Liquid Crystal you get instant, effective protection from UV and dirt. Fast and easy to use.

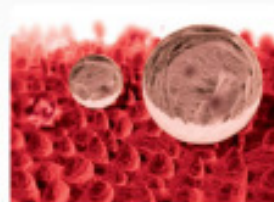


### LEATHER GUARD

LI Leather Guard is ultra durable, stain resistant, and offers significant abrasion resistance. It also prevents dye transfer onto pale leather, typically preventing blue jeans marking cream leather seating.

#### SMART SURFACE SCIENCE PROTECTS AGAINST:

- » Cracking and Splitting
- » Ink Stains
- » Liquid Spills
- » Food
- » Wear and Tear



### SMART FABRIC

Unlike regular fabric coatings, the nano particles of II Smart Fabric coat the individual fibers of the fabric, thereby leaving the breathability and feel of the fabric unaffected. The former means that the stale air can still escape, but at the same time repels any water or oil-based liquids. Being solvent based ensures a much deeper penetration of the active ingredient, giving Gtechniq Smart Fabric treated surfaces better durability and overall performance than current generation fabric sealants.

#### SMART SURFACE SCIENCE PROTECTS AGAINST:

- » Liquid Spills
- » Food Harmful UV Rays
- » Perspiration
- » Odors