



TORNADOR
PROFESSIONAL CLEANING TOOLS

ZV-240
TORNADOR®
VELOCITY-VAC
DRY

- **Increases Vacuum Suction**
- **Patented TORNADOR Action**
- **A Huge Time-Saver**

A TORNADOR® Power Vacuum for Faster Interior Automobile Cleaning

The TORNADOR® *VELOCITY-VAC DRY* (ZV-240) is our latest addition to the TORNADOR® tool family. The ZV-240 takes your vacuuming to a whole new level. The patented TORNADOR® ball-bearing rotation quickly lifts dirt and grime from carpet fibers that other vacuums leave behind. The unique shape and technology of the cone also adds additional suction power to your vacuum. The TORNADOR® *VELOCITY-VAC DRY* easily attaches to an air source and a wet/dry vacuum. This new technology combination will streamline your automotive detailing and reconditioning challenges. It's ideal for use in quick Wash and Vac detailing situations in Car Washes, Body Shops, New Car Get-Ready and other quick detailing jobs. The *VELOCITY-VAC DRY* is a quick and economical solution to combat everyday interior problems.

ZV-240 TORNADOR VELOCITY-VAC DRY

Awarded Global Media Award for New Product at SEMA 2015!



Can be Used as a Vacuum Only



Engage the TORNADOR® Action for Super Deep Vacuuming

ZV-240 TORNADOR® VELOCITY-VAC DRY DATA SHEET

SAFETY REQUIREMENTS

- KEEP OUT OF REACH OF CHILDREN.
- DO NOT use this tool with acidic, flammable or combustible products. Use only with TORNADOR® approved products or neutral pH cleaners.
- Do not point cleaning tool at face or body.
- Avoid breathing in dust or handling debris that can be harmful to your health.
- Should you notice a tool malfunction, discontinue use and contact your supplier.
- Use caution when other people are in your surroundings and work area.
- Always disconnect the tool from the air supply when not in use and before changing accessories or when performing routine maintenance.
- Always check the tool for leaking hoses, loose fittings or damaged parts.
- The TORNADOR® VELOCITY-VAC DRY can cause noise from air pressure. Always wear hearing protection in order to avoid noise which can be damaging to your health.
- When using the TORNADOR® VELOCITY-VAC DRY, small pieces of debris can be whirled into the air. Always wear protective goggles or glasses to prevent eye contact.
- We recommend that you use caution cleaning safety related components such as seat belts as well as other areas like headliners, electrical or electronic modules.

AIR REQUIREMENTS

The TORNADOR® VELOCITY-VAC DRY requires a constant air pressure between 5.5 and 6.3 CFM at 78 to 90 psi, for optimum performance. DO NOT EXCEED 90 psi. **CAUTION:** Constant air supply rates vary depending on the size and power of the compressor. Always make sure tank and air lines are free from impurities, oil and water contamination.

INSTRUCTIONS FOR USE

- Check all contents and read instructions carefully.

Installing the Flexible Tube (part #VT-120)

Step 1. Take supplied small flexible tube (part #VT-120) and press onto the end of the rotation set as shown in *fig. 1 and 2* on the right. Wetting the end of the tube and rotate set allows for easier installation.

Step 2. Once flexible tube has been applied, trim excess tube to allow proper distance from tube. The tube tip must not extend beyond the cone end and must not touch the surface to be cleaned.

NOTE: In order for the rotation set to rotate properly and obtain full function, be sure the flexible tube duplicates the finished step shown in *fig. 3*.

Installing the ZV-240 VELOCITY-VAC DRY Attachment

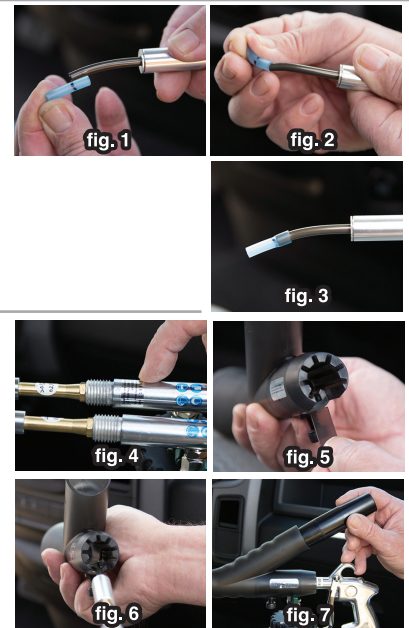
Step 3. Before placing the vacuum attachment onto tool assembly, be sure the gun assembly is free of labels or dirt that may interfere with the attachment. DO NOT FORCE the attachment. The part should install easily if the valve body is clean and free of labels. *See fig. 4.*

Step 4.. In the parts bag you will find a Flat Plastic Key used to seat the attachment to the valve body. Place the Flat Plastic Key into place between the gun assembly and the attachment. *See fig. 5.*

Step 5. Once the Flat Plastic Key is in place, slide the Vacuum Attachment onto the gun assembly furthest back meeting the gun handle. *See fig. 6.* Next tighten Screw (part #VS-023) firmly to gun assembly. DO NOT OVER TIGHTEN!

Step 6. Place the Reducer (part #VR-200) into Vacuum Attachment. *See fig. 7.* Then attach a Wet/Dry Vacuum Hose onto the Reducer end. USE A WET/DRY VACUUM ONLY ONLY!

For best results and control, use two hands during operation. Grasp the attachment with one hand and use the other hand to control the gun assembly; depressing the trigger to begin use.



CLEANING STEPS & TIPS

1. Remove large debris first. Start by turning on your wet-dry vacuum.
2. Connect air source and the wet/dry vacuum.
3. With the air connected and vacuum turned on, start by just using the vacuum then repeat depressing the trigger engaging the rotation set. This will assure that any loose dirt or debris will be completely removed. Repeat if necessary.

CARE & MAINTENANCE

- Maintain proper air pressure. DO NOT EXCEED 90 psi.
- DO NOT USE ACIDIC OR HIGH ALKALINE PRODUCTS.
- As for many tools, common maintenance procedures will ensure optimal performance and tool life. **KEEP IT CLEAN!**

• **NOTE:** Be sure the tool has been disconnected from the air source and vacuum hose has been removed before performing any maintenance.

• Depending on the time and type of use, always take time to remove the attachment and inspect for dirt build up or trapped debris. Rinse attachment, then using pneumatic oil or a thin lubricant, oil rotation set often. *See fig. 8.* Reinstall attachment for next use.

• To prolong the life of the rotation set and maintain peak performance, be sure no dirt build up has formed around the rotation set. *See fig. 9.*

